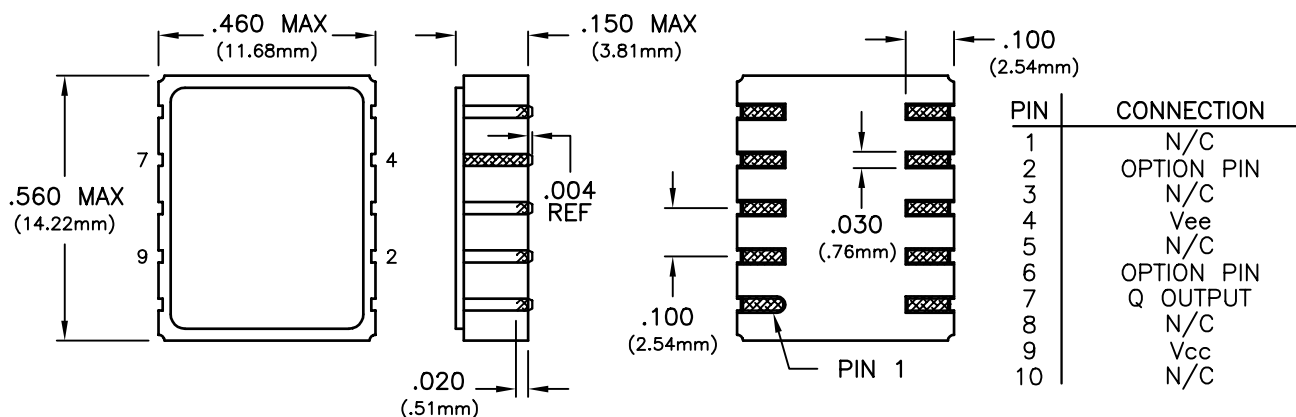
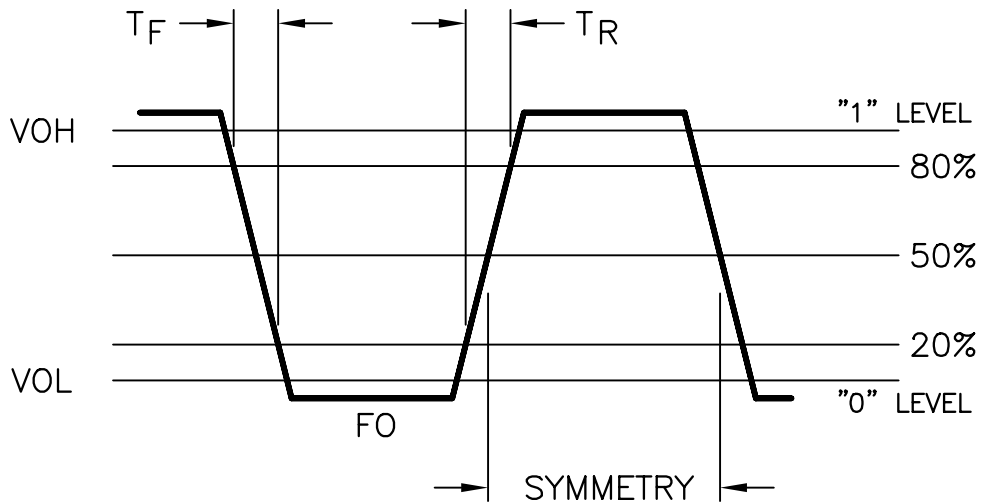


SURFACE MOUNT 3.3V PECL

SPECIFICATIONS	EE94-51*	EE94-52*	EE94-53*	EE94-54*	
Frequency Range	13MHz to 162MHz	13MHz to 200MHz		13MHz to 162MHz	
Frequency Stability	±25ppm	±50ppm	±100ppm	±20ppm	
	(Inclusive of calibration tolerance at 25°C, operating temperature range, input voltage change, load change, aging, shock and vibration)				
Temperature Range	0°C to +70°C				
Output	Waveform	Low Voltage, PECL Squarewave			
	Load	Output must be terminated into 50 ohms to Vcc-2V			
	Voltage	Voh	2.275 Minimum		
		Vol	1.68 Maximum		
	Duty Cycle	45/55 Maximum measured at 1.97V			
	Rise/Fall Time	1nS Maximum measured from 20% to 80%			
Jitter	10pS RMS Maximum				
Supply Voltage (Vcc)	+3.3Vdc ±5%				
Supply Current	60mA Maximum				
Package	Hermetically sealed, leadless ceramic package				
Options * (add letter to end of model number)	0	Pin 2 and Pin 6: No Connection			
	1	Pin 6: Complementary Output , Pin 2: No Connection			
	2	Pin 2: Enable/Disable , Pin 6: No Connection Enable; Low Level, Vil (3.40V Max) , Disable; High Level, Vih (3.87V Min) NOTE: When oscillator is disabled the output is in a low state (Vol)			
	3	Pin 2: Complementary Output , Pin 6: No Connection			
	4	Pin 6: Complementary Output , Pin 2: Enable/Disable Pin 6 Disables to low state (Vol), Pin 7 Disables to high state (Voh)			



OUTPUT WAVEFORM



TEST CIRCUIT

